

## Directions

The Providence Plan is located on the 3<sup>rd</sup> floor of 10 Davol Square—the triangular lot outlined in blue between Point St., Eddy St., and Richmond St. (Please note we are **not** located in One Davol Square).

### *From the North*

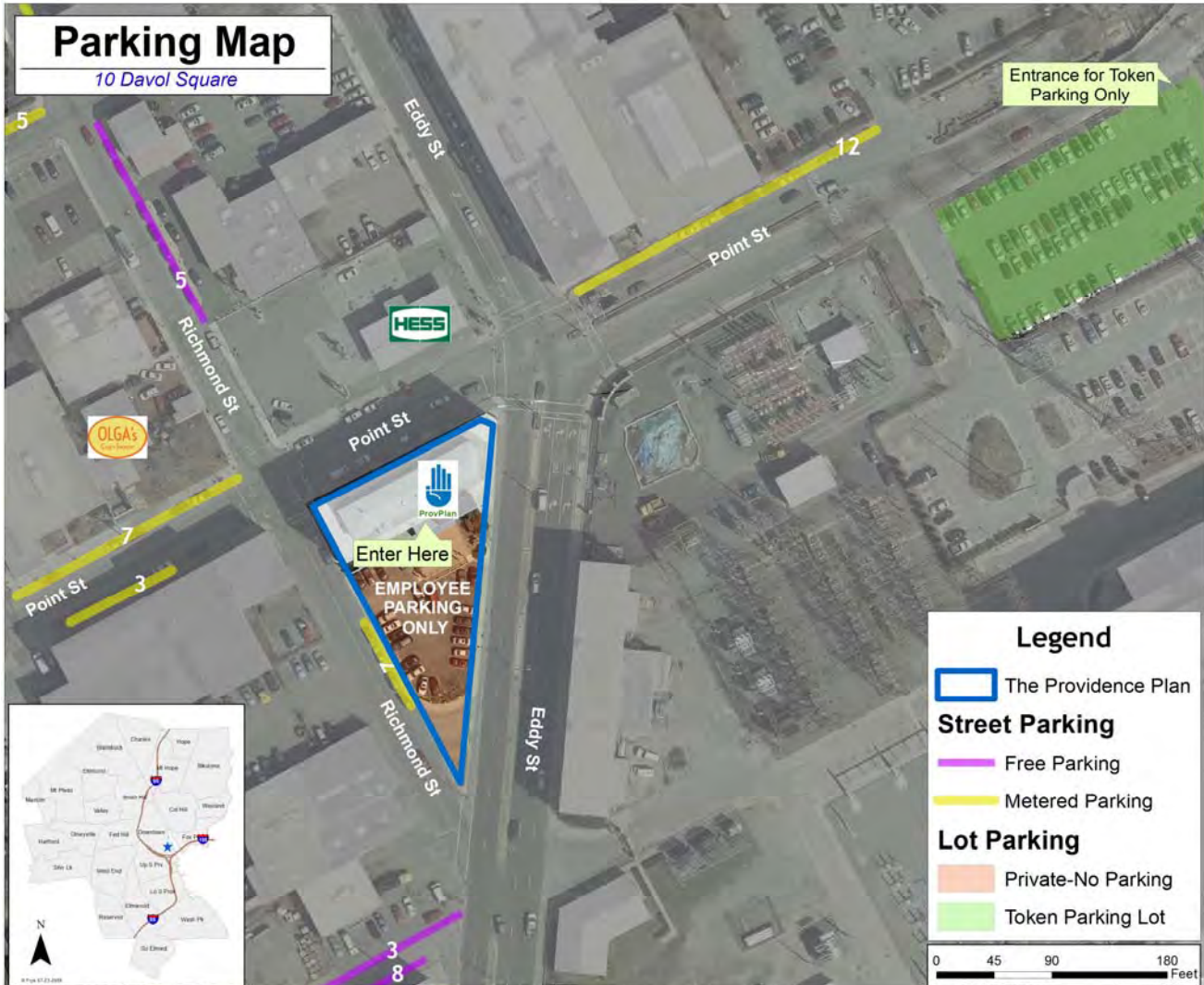
Take I-95 S to Exit 19 for Eddy Street. Turn left onto Eddy St and then turn left at the T continuing on Eddy St. Drive North approximately one-quarter mile to The Providence Plan on left.

### *From the South*

Take I-95 N to Exit 20 for Point Street. Turn right onto Point St and drive East for one-quarter mile to The Providence Plan on right.

## Parking

There is no off-street parking available for visitors to 10 Davol Square. There is both free and metered parking available nearby. Please park on the street in one of the areas highlighted on the map below.



Please call The Providence Plan if you get lost or need further directions (401) 455-8880 x200